

VOU-Series

Features and Strengths

- Best suitable for handling long objects with flat and curved surfaces
- Good lifting forces can be achieved with small size
- Conductive silicon is excellent for handling PCB board or Electronic components
- Easily mountable without detach a fitting from the machine (save the maintenance time)



Suitable for Handling

- Semiconductor Chips (PCB board)
- Electronic components
- Small glass cases (e.g. ampule)
- Pipe

Order No.

VOU 15X45 - N F - 18F - L1820TN

① ② ③ ④ ⑤

① Vacuum pad Ø

VOU 4 X 10
VOU 4 X 20
VOU 6 X 10
VOU 6 X 20
VOU 8 X 20
VOU 8 X 30
VOU 10 X 30
• VOU 15 X 45
VOU 20 X 60

② Material

- N - NBR
- S - Silicon
- C.S - C.Silicon
- U - Urethane

③ Filter

- No mark - Standard
 - F * - With filter
- * : Only for VOU 15 X 45
VOU 20 X 60

④ Fitting thread

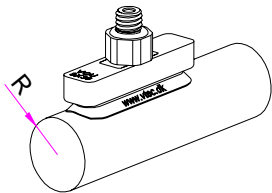
- | | |
|----------------------|----------------------|
| M5M - M5X0.8 Male | VOU 4X10, 4X20, 6X10 |
| M5F - M5X0.8 Female | 6X20, 8X20, 8X30 |
| | 10X30. |
| 18M - G1/8" Male | |
| • 18F - G1/8" Female | VOU 15X45, 20X60 |

⑤ Level spring (Accessory)

- | | |
|-----------|--|
| L507TN | VOU 4X10, 4X20, 6X10, 6X20
8X20, 8X30, 10X30. |
| • L1820TN | VOU 15X45, 20X60 |

VOU-Series

Technical Data



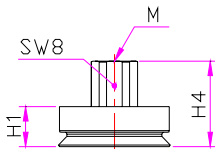
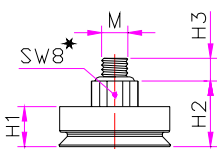
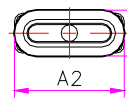
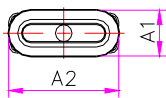
Model	Suction force (kg)	Internal volume (cm ³)	Min. curvature radius R (mm)	Weight ≐ (Kg)
VOU 4X10 - ...	0.205	0.064	3.5	0.00031
VOU 4X20 - ...	0.347	0.094	3.5	0.00036
VOU 6X10 - ...	0.256	0.081	4.5	0.00031
VOU 6X20 - ...	0.603	0.137	4.5	0.00037
VOU 8X20 - ...	0.818	0.17	6.5	0.00037
VOU 8X30 - ...	1.053	0.25	6.5	0.00043
VOU 10X30 - ..	1.554	0.394	8	0.00047
VOU 15X45 - ..	3.271	1.584	11	0.022
VOU 20X60 - ..	6.352	3.532	17	0.031

Dimension

▼ VOU 4X10 ~ 10X30

Male thread

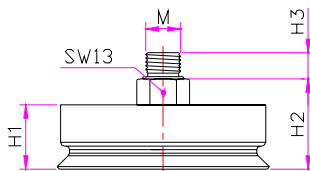
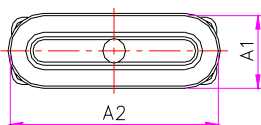
Female thread



Model	A1	A2	H1	H2	H3	H4	M
VOU 4X10..M5M	4	10	7	11.5	4	-	M5 X 0.8
-				-	15	M5 X 0.8	
11				4.5	-	M6 X 1.0	
VOU 4X20..M5M	4	20	7	11.5	4	-	M5 X 0.8
-				-	15	M5 X 0.8	
11				4.5	-	M6 X 1.0	
VOU 6X10..M5M	6	10	7	11.5	4	-	M5 X 0.8
-				-	15	M5 X 0.8	
11				4.5	-	M6 X 1.0	
VOU 6X20..M5M	6	20	7	11.5	4	-	M5 X 0.8
-				-	15	M5 X 0.8	
11				4.5	-	M6 X 1.0	
VOU 8X20..M5M	8	20	7	11.5	4	-	M5 X 0.8
-				-	15	M5 X 0.8	
11				4.5	-	M6 X 1.0	
VOU 8X30..M5M	8	30	7	11.5	4	-	M5 X 0.8
-				-	15	M5 X 0.8	
11				4.5	-	M6 X 1.0	
VOU 10X30..M5M	10	30	8.2	12.7	4	-	M5 X 0.8
-				-	16.2	M5 X 0.8	
12.2				4.5	-	M6 X 1.0	
VOU 15X45..18M	15	45	15.5	23	7	-	G1/8"
-				-	25.5	G1/8"	
25				7.7	-	M10 X 1.5	
VOU 20X60..18M	20	60	17.5	25	7	-	G1/8"
-				-	27.5	G1/8"	
27				7.7	-	M10 X 1.5	

▼ VOU 15X45, 20X60

Male thread



Female thread

